

YARNSMITHS



Knit
Intermediate
81 - 117cm
32 - 46ins

Create
CHUNKY

Flurry
Design N°
7050

Flurry Jumper

Materials and Measurements

To fit Bust/Chest Sizes				
81/86	91/97	102/107	112/117	cm
32/34	36/38	40/42	44/46	ins
Actual Measurements				
97.5	106	123	132	cm
38.25	41.75	48.5	52	ins
Length from back neck				
64.5	67.5	70	70	cm
25.5	26.5	27.5	27.5	ins
Sleeve Seam				
42	43	45.5	45.5	cm
16.5	17	18	18	ins
Yarnsmiths Create Chunky				
Main (M)				
6	7	7	8	Balls
Contrast (C)				
1	1	1	1	Balls
Photographed using Shades M 5210 Christmas Green and 5040 C White 5.5mm (US 9) and 6.5mm (US 10) Knitting Needles Stitch Holders				

IMPORTANT

Please note that the limitations of the printing process mean that the actual colour will not always precisely match the colours in the photograph.

Use only the Yarnsmiths yarn specified. We cannot accept responsibility for an imperfect garment if any other brand is used. It is essential to work to the tension stated. The quantities of yarn stated are based on average requirements and are therefore approximate.

Instructions given for the smallest size, larger sizes given in round brackets.

Where only one figure is given this applies to all sizes.

ABBREVIATIONS

K – Knit; **P** – Purl;
st(s) – stitch(es);
st st – stocking stitch (1 row knit, 1 row purl); **rept** – repeat; **inc** – increase;
dec – decrease;
beg – beginning; **sl** – slip; **0** – no stitches or rows to be worked in this particular size; **patt** – pattern;
M – Main; **C** – Contrast; **cm** – centimetres; **ins** – inches.

TENSION

It is important to check your tension before commencing the garment.

14 sts and 20 rows to 10 cm (4 ins) over st st on 6.5mm needles. If there are too many stitches to 10 cm, then your tension is tight and you

will need to change your needle to a larger size. If there are too few stitches to 10 cm, then your tension is loose and you will need to change your needle to a smaller size.

FRONT

**Using 5.5mm needles and M, cast on 63 (69, 77, 85) sts.

1st row - K1, *P1, K1, rept from * to end.

2nd row - P1, *K1, P1, rept from * to end.

Rept the last 2 rows for 7.5 cm, (3 ins) finishing on a first row.

Next row (Inc row) - Rib 4 (4, 3, 4), inc in next st, *rib 17 (19, 9, 14), inc in next st, rept from * to last 4 (4, 3, 5) sts, rib to end. 67 (73, 85, 91) sts.

Change to 6.5mm needles.

Work 4 rows in st st (1 row knit, 1 row purl)

Commence Patt

Join in C.

1st row (Right side) - K1C, *5M, 1C, rept from * to end.

2nd row - *P2C, 3M, 1C, rept from * to last st, PIC.

3rd row - K1M, *2C, 1M, rept from * to end.

4th row - *P2M, 3C, 1M, rept from * to last st, P1M.

5th row - K1M, *2M, 1C, 3M, rept from * to end.

6th row - Using M, Purl.

Break off C.

Continue in st st and M only until work measures 42 cm, (16.5 ins) from commencement finishing on a P row.

Shape Armholes

Cast off 3 (6, 3, 6) sts at beg of next 2 rows. 61 (61, 79, 79) sts.

Work 2 (2, 6, 6) rows.

Commence Chart 1

Join in C.

1st row (Right side) - K1C, *5M, 1C, rept from * to end.

2nd row - *P2C, 3M, 1C, rept from * to last st, PIC.

Commencing on the 3rd row, continue working from chart until the 26th row has been worked.

Break off C. Continue in M only.**
Work 3 (5, 5, 5) rows finishing on a right side row.

Shape Neck

Next row - P37 (37, 46, 46), sl the last 13 sts just worked onto a st holder, P to end.

Continue on the last set of sts as follows:-

Dec 1 st at neck edge on every row until 18 (18, 26, 26) sts remain.

Continue without further dec until armhole measures 23 (25.5, 28, 28)cm, 9 (10, 11, 11) ins finishing on a P row.

Shape Shoulder

Cast off remaining sts.

With right side facing, rejoin yarn to remaining sts at neck edge.

Work as instructions given for other side.

BACK

Work as instructions given for Front from ** to **.

Continue in st st until armholes measure same as front to shoulder finishing on a P row.

Shape Shoulders

Next row - Cast off 18 (18, 26, 26) sts, K25 (25, 27, 27) including st on needle, cast off remaining 18 (18, 26, 26) sts.

Sl centre 25 (25, 27, 27) sts onto a st holder. Break off yarn.

SLEEVES (Both Alike)

Using 5.5mm needles and M, cast on 29 (29, 33, 33) sts.

Work 6.5 cm (2.5 ins) in rib as given for front finishing on a 1st row.

Next row (Inc row) - Rib 0 (0, 2, 2) inc in next st, *rib 2, inc in next st, rept from * to last 1 (1, 3, 3) sts, rib to end. 39 (39, 43, 43) sts.

Change to 6.5mm needles.

Work 4 rows in st st, inc 1 st at each end of the needle on the 3rd row. 41 (41, 45, 45) sts.

Commence Chart 2

Join in C where necessary.

1st row (Right side) - K5 (5, 1, 1) M, 1C, *5M, 1C, rept from * to last 5 (5, 1, 1) sts, K5 (5, 1, 1)M.

2nd row - P1 (1, 3, 3)C, 3M, *3C, 3M, rept from * to last 1 (1, 3, 3) sts, P1 (1, 3, 3)C.

Commencing on the 3rd row, continue working from chart, inc 1 st at each end of the needle on the next and every following 4th row until the 26th row of the chart has been worked. 53 (53, 57, 57) sts. Continue in M only, inc 1 st at each end of the needle on the next and every following 6 (4, 4, 4)th row until 63 (71, 77, 77) sts are on the needle.

Continue without further inc until sleeve measures 42 (43, 45.5, 45.5) cm, 16.5 (17, 18, 18) ins from commencement finishing on a P row. (Mark each end of last row with a coloured thread.)

Work a further 4 (8, 4, 8) rows for sleeve extension.

Cast off loosely.

PRESSING

With wrong side facing, pin out all pieces to measurements given.

Press as instructions given on ball band.

MAKING UP

Join right shoulder seam by top sewing.

Neckband

With right side facing using 5.5mm needles and M, pick up and K13 (15, 17, 17) sts down left side neck, K13 sts from front neck st holder, pick up and K14 (16, 18, 18) sts up right side neck and K25 (25, 27, 27) sts from back neck st holder. 65 (69, 75, 78) sts.

Commencing on a 2nd row, work 4.5cm, (1.75 ins) in rib finishing on a 2nd row.

Cast off loosely in rib.

Join left shoulder seam by top sewing, join neckband by top sewing.

Join side seams and sleeve seams to markers by top sewing. Pin sleeves into position placing sleeve

extension to cast off sts at underarm, sew in by top sewing.

CHART 1

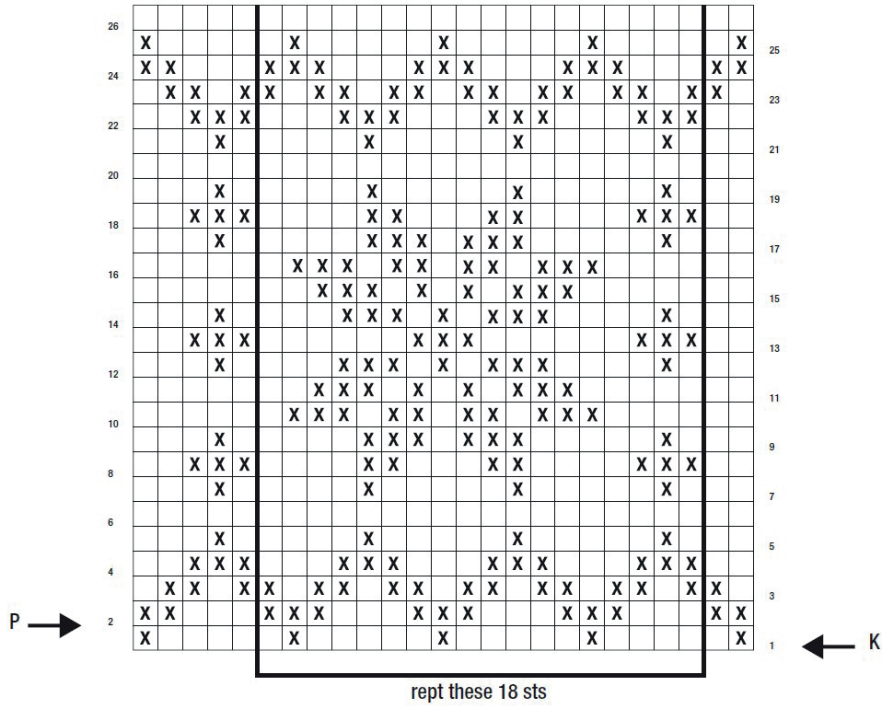
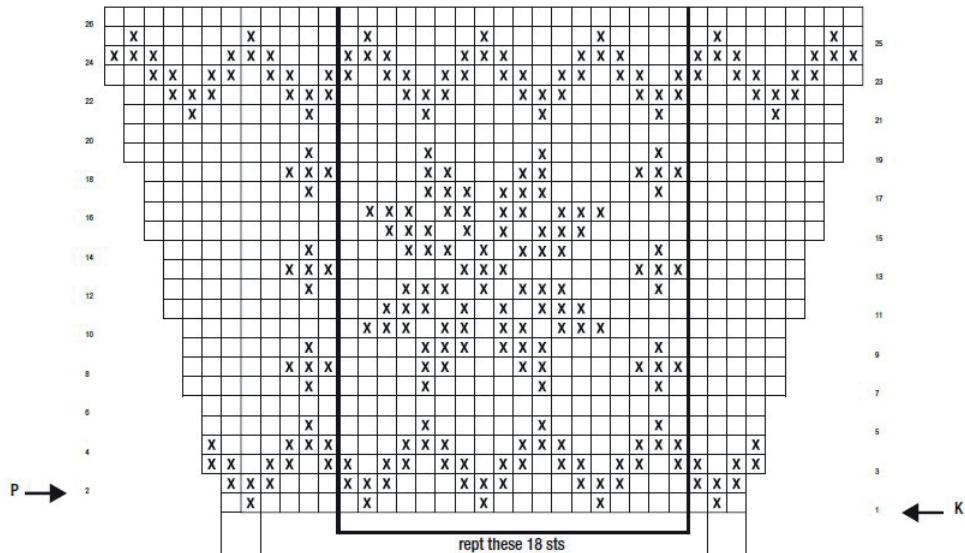


CHART 2



(102/107, 112/117) cm
(40/42, 44/46) inch sizes

81/86 (91/97) cm
(36/38) inch sizes

81/86 (91/97) cm
(36/38) inch sizes

(102/107, 112/117) cm
(40/42, 44/46) inch sizes

Email: sales@yarnsmiths.co.uk

© YARNSMITHS All our designs and publications are protected by copyright. Unauthorised copying in any form, is illegal and represents a breach of this copyright. In the event of any unauthorised and illegal copying we reserve the right to take appropriate legal action to protect our interests.